
ΦΑΘ NEWS

FEBRUARY 2023

A MESSAGE FROM OUR PRESIDENT



Welcome to my first address as President of Phi Alpha Theta. My name is Debra Mulligan and I have served as faculty advisor for the Alpha Eta Kappa Chapter at Roger Williams University since 2001. At my university, we induct about 22-25 students a year on average, which indicates that while requirements are rigorous, students continue to strive toward excellence.

Phi Alpha Theta is an organization that promotes the study of history for undergraduates and graduates. We offer students an opportunity to present their original research at regional and national conferences and we further encourage their efforts through our paper prize and Best Chapter competitions held every year.

Since March 17, 1921, when President Andrew Nels Cleven established Phi Alpha Theta at the University of Arkansas, the society has ensured that future historians will have a place to showcase the fruits of their labor. Our mission, to “promote the study of history through the encouragement of research, good teaching, publication, and social exchange,” continues to serve as our cornerstone.

On a personal note, I returned from our Biennial Meeting in Albuquerque, New Mexico last month and the enthusiasm from students and faculty was invigorating. There was a definite energy at the conference, with first-time attendees anxiously rushing to panels, posing for group photographs with fellow students, while others met with faculty advisors for last-minute advice and encouragement.

Although national statistics continue to emphasize the drop in the number of history majors since the Recession of 2008, our Phi Alpha Theta membership continues to defy this trend. At 980 chapters throughout the country, students and faculty have steadfastly championed the discipline despite the media's bleak prognosis.

At Yale, where history thrives as a field of study, Chair Alan Mikhail underscores the need to investigate and analyze the past so that we may untangle and "embrace the messiness of politics, culture, and economics." Armed with the knowledge of what came before, history students possess the key to unlocking the historical meaning behind the media's clamor for our attention. After all, the only way to guard against false pronouncements is to arm ourselves with a solid foundation in our history.

Finally, I wish to offer many thanks to students who continue to explore the fundamentals of history and faculty advisors who are resolute in their promotion of our society. Without all of you, we could not have sustained this organization for the last hundred years. I am grateful for your vision, which will lead Phi Alpha Theta to the next chapter in its path to success.

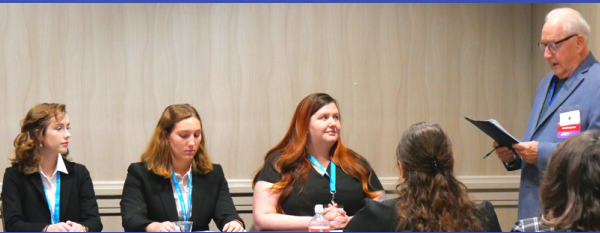
In Loving Memory



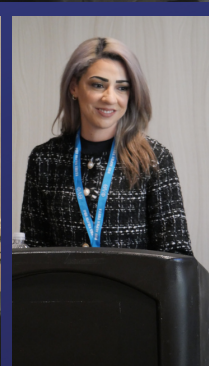
Dr. Fred Jewell

Fred Jewell was the definition of a gentleman and a scholar and served as the Eta Phi chapter advisor for 33 years, as well as serving Phi Alpha Theta at the national and regional level. He was national secretary during the 1980s, and served as treasurer for AACHT as well. He served as the national representative at openings of new chapters. Fred worked at Harding from 1968-2009 and trained generations of historians and teachers, who remember him with great respect and affection. He was happily married for 59 years to Dr. Mrs. Alice Jewell, and they have four talented and successful adult children and eight amazing grandchildren. He retired as a college professor in 2009 after a 42.5-year career spanning 11 Summer Olympics, 7 U.S. presidential administrations, 4 wars, 3 recessions, and countless political scandals. He served as an Elder at the College Church of Christ and went on numerous mission trips to Russia, Scotland, Albania, Finland, and elsewhere. He led overseas trips and taught his students and colleagues not only about history, but about life, love, patience, and gentleness. He will be dearly missed.

BIENNIAL RECAP



Our time in Albuquerque for the Biennial Convention was amazing! With 56 panels, a roundtable, 159 presenters, and 38 panel chairs, our students, faculty, and staff had a wonderful time learning and connecting. We hope to see you participate in Regionals this season, and at future Biennial Conventions!



REGIONAL CONFERENCES

ALABAMA

AUBURN UNIVERSITY
AT MONTGOMERY
FEBRUARY 25
MBURGER1@AUM.EDU

CALIFORNIA SOUTH

CALIFORNIA LUTHERAN
UNIVERSITY
MARCH 25
DNELSON@CALLUTHERAN.EDU

CAROLINA

COLLEGE OF
CHARLESTON
FEBRUARY 25
COVERTLP@COFC.EDU

GEORGIA

COLUMBUS STATE
UNIVERSITY
APRIL 14-15
NEWHALL_CAROLINE@
COLUMBUSSTATE.EDU

DAKOTA

UNIVERSITY OF
SOUTH DAKOTA
FEBRUARY 23
CLEHMANN@USD.EDU

NEW JERSEY

NEW YORK
DOMINICAN UNIVERSITY
NEW YORK
APRIL 29
CHRISTOPHER.LIBERTINI@DUNY.EDU

PENNSYLVANIA

EAST

MARYWOOD UNIVERSITY
APRIL 1
JRICHT@MARYWOOD.EDU

UTAH

UNIVERSITY OF UTAH
MARCH 31
JANET.THEISS@UTAH.EDU

VIRGINIA

UNIVERSITY OF
LYNCHBURG
APRIL 1
CRUTCHFIELD_LL@LYNCHBURG.EDU

Learn more about Regionals here: phialphatheta.org/regional_conferences/

Warm Head Sharp Mind



$\Phi\Delta\Theta$
History Honor Society

Get 15% off
PAT Beanies
MyPhiAlphaTheta.com

Check out our new shirts, too!

myphialphatheta.com/products/phi-alpha-theta-logo-t-shirt



KNOW SOMEONE INTERESTED IN $\Phi\Delta\Theta$?

NOW IS THE TIME TO START A CHAPTER!
DIRECT YOUR COLLEAGUES TO

PHIALPHATHETA.ORG/STARTING-A-CHAPTER/

TO BEGIN THE APPLICATION PROCESS

Meet the Office



Jessica Bourdeau
Chief Operations Officer



Cassidy Simpson
Operations Supervisor



Courtney Landis Zaffuta
Social Media Manager



Laura Golanek
Staff Assistant



Elise Gammage
Staff Assistant

CONNECT WITH PAT



[@PATNational](#)

info@PhiAlphaTheta.org

[@PhiAlphaTheta](#)

[@PAT_History](#)